

THE WORLD HERITAGE

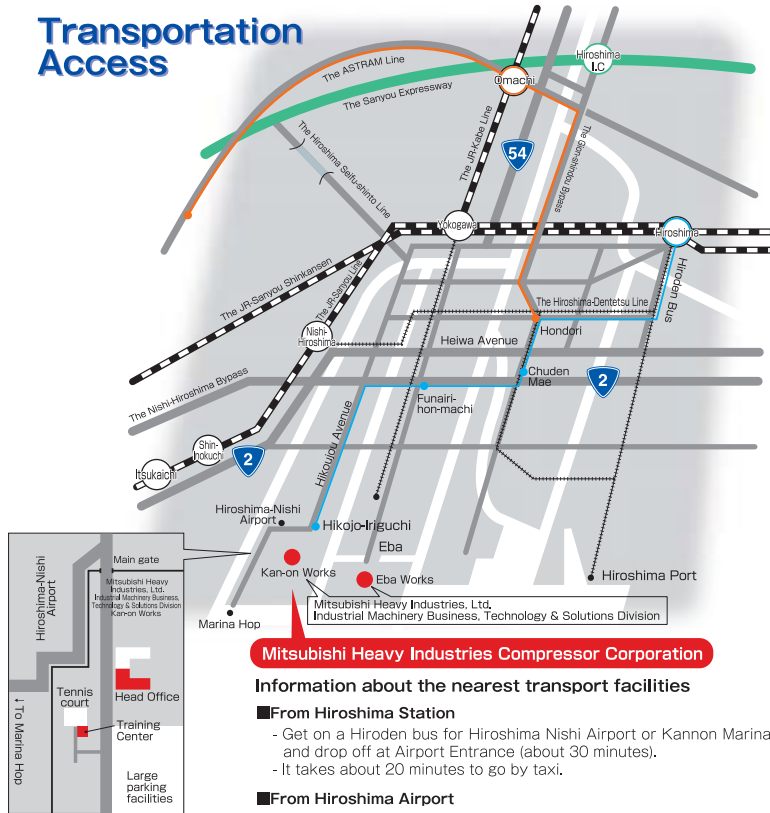


Itsumushima Shinto Shrine (MIYAJIMA)



Hiroshima Peace Memorial (Genbaku Dome)

Transportation Access



Mitsubishi Heavy Industries Compressor Corporation

Information about the nearest transport facilities

■ From Hiroshima Station

- Get on a Hiroden bus for Hiroshima Nishi Airport or Kannon Marina Hop and drop off at Airport Entrance (about 30 minutes).
- It takes about 20 minutes to go by taxi.

■ From Hiroshima Airport

- Get on a limousine bus for Hiroshima Station (about 50 minutes).
- At Hiroshima Station you can get on a bus or take a taxi as described above.

● Head Office

6-22, Kan-on-shin-machi 4-chome, Nishi-ku, Hiroshima. 733-8553 Japan
Phone 81-82-291-2068 Fax 81-82-294-1663

● Tokyo Office

16-5 Konan 2-chome, Minato-ku, Tokyo, 108-0075, Japan (MHI Bldg. 6th Floor)
Phone 81-3-6716-5370 Fax 81-3-6716-5914

TRAINING CENTER for TURBOMACHINERY



Received Over 1300 trainees since Opening of the Training Seminar

Ensure skills and realistic experiences by simulator and training tools
Spread curriculums cover every level from beginner to expert
Lecture/Practice by well skilled training staffs with many experiences.

The latest computer-aided operation simulator room

Master of start-up/stop operation and countermeasure to malfunction created intentionally by up-to-date digitized simulator in safe. Various kinds of operation modes with many kinds of drivers, such as steam turbine, gas turbine, motors are possible to be simulated instantaneously, by digitized application. Dry gas seal or oil seal is applicable as seal system of compressor. Additionally sound effect system is also provided to give a similar feeling of site operation.

Offering training just as if it were on site education

Standard Course-formulated from our years of extended experience.
(Operation and Maintenance, 8 days each)



Especially the latest computer aided operation simulator can simulate various kinds of operation modes (20 patterns) and can simulate over 40 kinds of extraordinary situations in each patterns for operators to correspond to those actual conditions on site.

The courses both of operation and maintenance have been carefully arranged to maximize the ease of learning incorporating lecture and practice program with each its specialized trouble shooting curriculum.

And we have incorporated some state of the examples of design improvements.



Operation



Start up training by turbine model



Training in front of DCS under the indication of Instructor



Training by digital display simulating local area.



Training by DCS in CCR

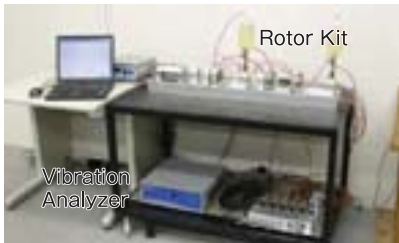
Maintenance



Training by using dry gas seal model



Assembling/disassembling by scaled compressor model



Vibration analyzer and rotor kit being excited various vibrations.



Assembling/disassembling by scaled turbine model

Products

Centrifugal Compressor



Steam Turbine



Centrifugal Compressor



Products and Services of Mitsubishi Turbo Machines

Products :

- # Steam Turbine
- # Centrifugal Compressor
- # Axial Compressor

Our service offerings include :

- # Engineering (feasibility studies, application engineering, system design optimization, and revamping design)
- # Supervisory field service i.e. installation, startup, and commissioning
- # Contractual service agreements
- # Parts supply
- # Emergency trouble shooting
- # **Training**

CONTRIBUTION TO YOUR NEEDS

Backed by over 50 years of experience in the turbo machinery field, the Training Center at MHI COMPRESSOR Co. contributes to meeting all of your training needs.

Our goal is to provide your personnel with the knowledge and confidence to assure the safe, reliable Operation and maintenance of your Mitsubishi' equipment.

Our team of instructors, whose talent and experience are enriched by many years of service and engineering work, have along and successful history of training operators, mechanics and engineers.

Various training materials i.e. the latest computer aided operation simulators, precision scaled models, vibration analysers and more, are available for you to increase your practical knowledge of Mitsubishi' equipment.

We are confident that education and experience produce a safer environment, higher efficiency, and extended equipment life, and we believe this will meet to our fundamental policy as a Life Cycle Service Provider.



Axial Blower



Multi-shaft compressor